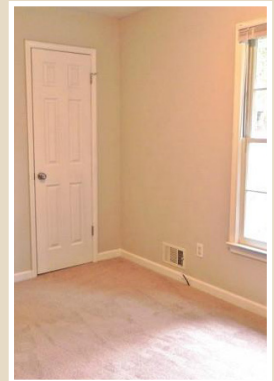


GORGEOUS & AFFORDABLE!

\$124,500

**4137 Wendell Way
Snellville, GA 30039**

FOR SALE



FEATURES

Status: Newly Renovated

Price: \$124,500

Bedrooms: 3 Bathrooms: 2

Garage: 2-Car

Features:

Fireplace, Deck, Comfortable Back Yard, Spacious Front Yard, All New Kitchen Appliances, New Roof and professional landscaping.

Schools:

Norton Elementary School
Snellville Middle School
South Gwinnett High School

Neighborhood:

This adorable, newly renovated home is located in the Quail Ridge community just south of the City of Snellville in Gwinnett County. Conveniently located, this home is less than 10 miles from Stone Mountain Park and approximately 40 minutes to the heart of Atlanta.

**ANDP AFFORDABLE
HOMEBUYER PROGRAM**

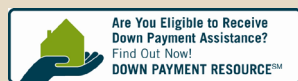
ANDP Homes is pleased to offer this home exclusively for qualifying buyers whose total household income is at or below 120% of area median income. See ANDP's household income limit on the table to the right.

Down Payment Assistance:

Georgia Dream: A program of the Georgia Department of Community Affairs - Prospective first-time homebuyers qualify for up to \$5,000 in down payment assistance. For more information, including eligibility, lender requirements, and more please visit www.GADream.com.

Homestretch: A program of Gwinnett County Government - Prospective homebuyers may qualify for up to \$7,500 in down payment assistance. For complete program details, eligibility, requirements, and more please visit www.GwinnettCounty.com and search keyword: Homestretch. You may also call 678-518-6008 or email homestretch@gwinnettcounty.com.

Household Size	120% AMI Income Limit
1	\$54,100
2	\$61,800
3	\$69,550
4	\$77,300



See a full list of possible assistance programs at <http://downpaymentresource.com/are-you-eligible/>

FOR MORE INFORMATION

Katie McNulty, PalmerHouse Properties
C: 404-281-1052 katie@katiemcnulty.com

